

Examples of font configuration of Firefox 3.0.10 to display
Private Use Area characters (for reference)

1. Traditional Chinese Windows XP/Vista

No configuration is required for Firefox 3.0.10 to display Private Use Area characters.

2. Traditional Chinese Windows 2000

- Start Firefox, in the address bar, type “**about:config** <enter>”
Click the “*I’ll be careful, I promise!*” button to proceed.
- In the filter field, type “**font.name**”
- Add “**細明體_HKSCS, MingLiU_HKSCS,**” before the value by double clicking the following “Preference Name”:

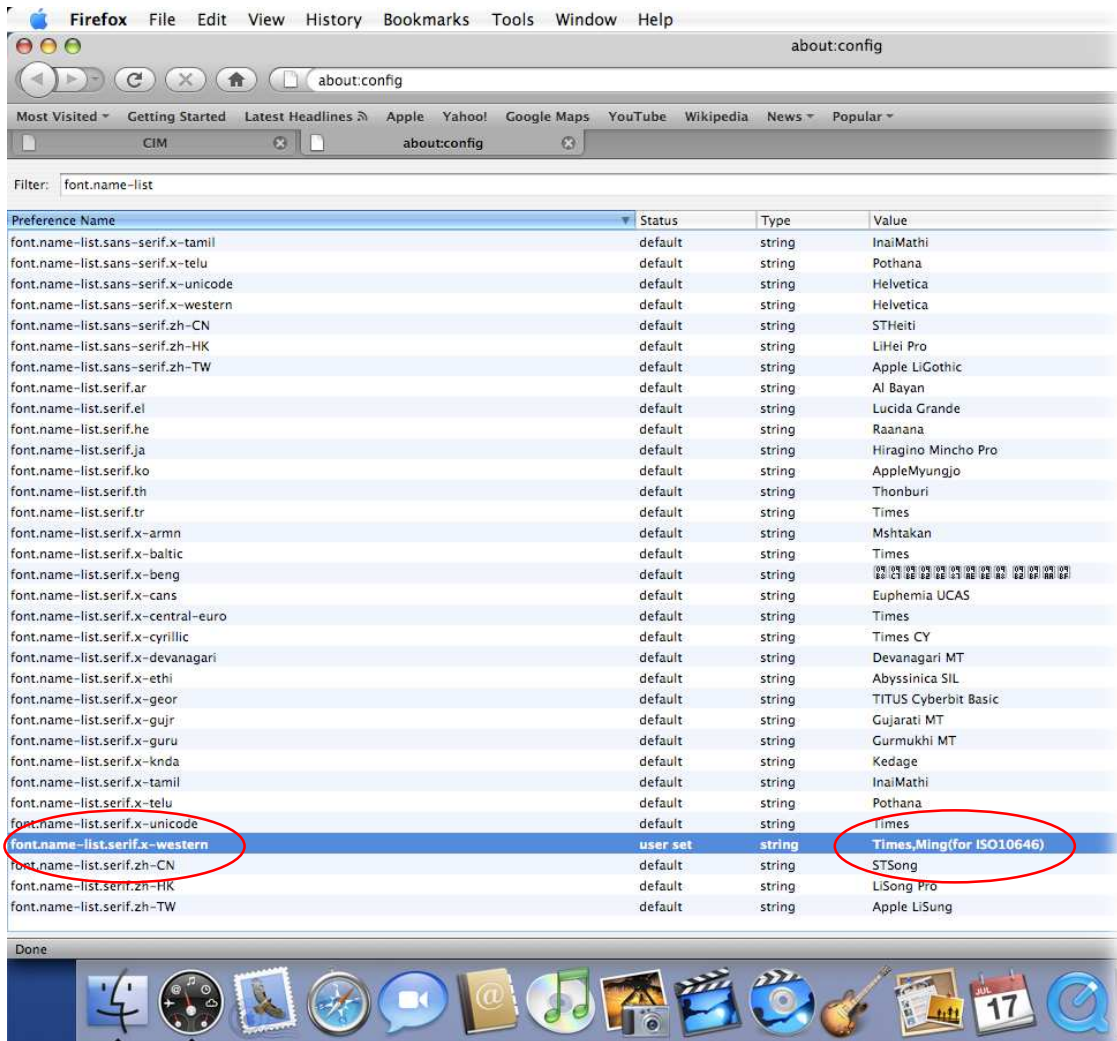
Font.name-list.sans-serif.zh-TW

Font.name-list.serif.zh-TW

Preference Name	Status	Type	Value
font.name-list.sans-serif.zh-TW	user set	string	細明體_HKSCS, MingLiU_HKSCS, 新細明體, PMingLiU, 細明體, MingLiU
font.name-list.serif.ja	default	string	Narkistin, David
font.name-list.serif.ja	default	string	MS PMincho, M S P 明朝, MS Mincho, MS PGothic, MS Gothic
font.name-list.serif.ko	default	string	Batang, □□, Gulim, □□
font.name-list.serif.x-arnn	default	string	Sylfaen, Arial Unicode MS, Code2000
font.name-list.serif.x-beng	default	string	Vrinda, Akaash, Likhan, Ekushey Punarbhabe, Code2000, Arial Unicode MS
font.name-list.serif.x-cans	default	string	Aboriginal Serif, BJCree Uni
font.name-list.serif.x-devanagari	default	string	Mangal, Raghundi
font.name-list.serif.x-ethi	default	string	Visual Gees Unicode, Visual Gees Unicode Agazian, Code2000
font.name-list.serif.x-geor	default	string	Sylfaen, BPG Paata Khutsuri U, TITUS Cyberbit Basic
font.name-list.serif.x-gujr	default	string	Shruti, Code2000, Arial Unicode MS
font.name-list.serif.x-guru	default	string	Raavi, Saab, Code2000, Arial Unicode MS
font.name-list.serif.x-khmr	default	string	PhnomPenh OT, Mondulkin U GR 1.5, Khmer OS
font.name-list.serif.x-knda	default	string	Tunga, AksharUnicode, Code2000, Arial Unicode MS
font.name-list.serif.x-mlym	default	string	AnjaliOldLipi, Kartika, TheolikaUnicode, Code2000, Arial Unicode MS
font.name-list.serif.x-orya	default	string	Kalinga, onlUni, Code2000, Arial Unicode MS
font.name-list.serif.x-sinh	default	string	Iskoola Pota, AksharUnicode
font.name-list.serif.x-tamil	default	string	Latha, Code2000
font.name-list.serif.x-telu	default	string	Gautami, Akshar Unicode, Code2000, Arial Unicode MS
font.name-list.serif.zh-CN	default	string	MS Song, 宋体, SimSun
font.name-list.serif.zh-HK	default	string	細明體_HKSCS, MingLiU_HKSCS, Ming(for ISO10646), MingLiU, 細明體
font.name-list.serif.zh-TW	user set	string	細明體_HKSCS, MingLiU_HKSCS, 新細明體, PMingLiU, 細明體, MingLiU
font.name.cursive.ar	default	string	Comic Sans MS
font.name.cursive.el	default	string	Comic Sans MS

3. Mac OS 10.4

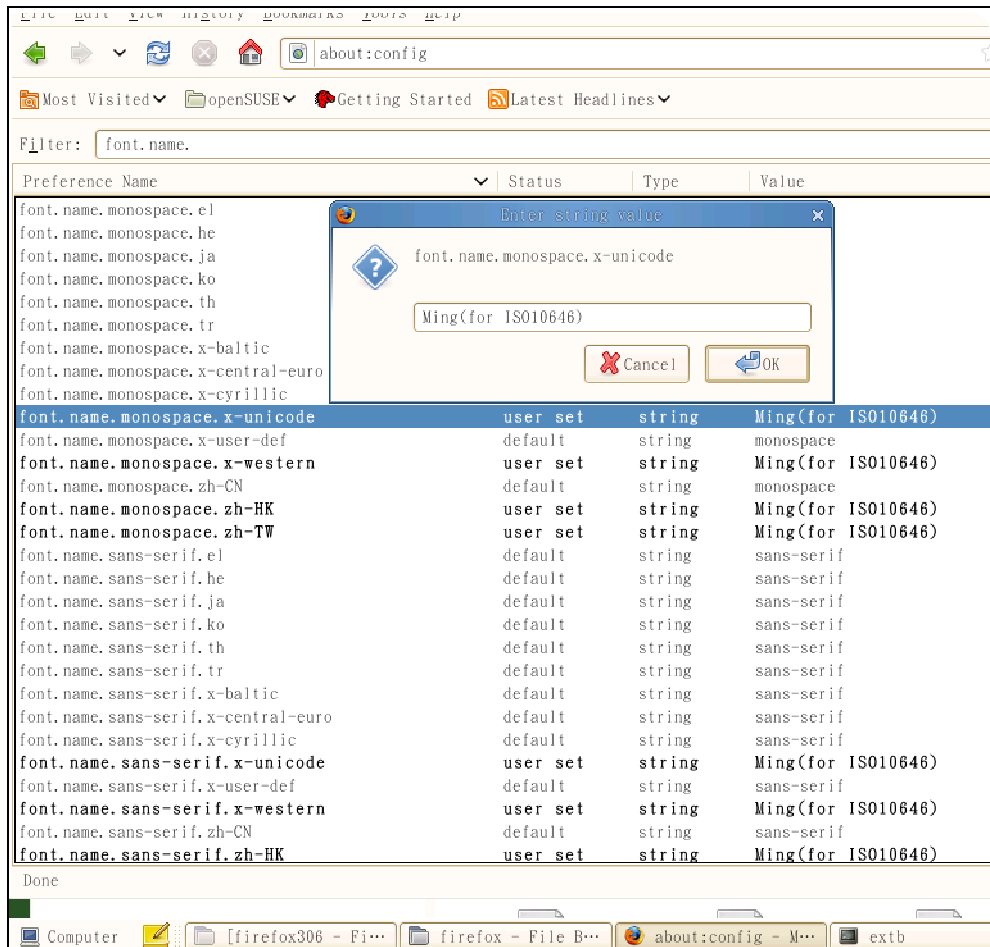
- Download the reference font, “Ming(for ISO 10646)”, from <http://www.ogcio.gov.hk/ccli/eng/hkscs/terms/terms34.html> .
- Unzip the file “ming_uni.ttf.gz” to obtain “ming_uni.ttf”, and then copy “ming_uni.ttf” to users/”user name”/library/fonts .
- Start Firefox, in the address bar type “**about:config** <enter>”.
- Click the “I’ll be careful, I promise!” button to proceed.
- In the filter field, type “**font.name-list**”
- Append “**Ming(for ISO 10646)**” to the end of the value by double clicking the following “Preference Name”
font.name-list.serif.x-western



4. Open SUSE 10.2

- Download the reference font (Ming(For ISO 10646)) from <http://www.ogcio.gov.hk/ccli/eng/hkscs/terms/terms34.html> .
- unzip the file “ming_uni.ttf.gz” to obtain “ming_uni.ttf”, and then copy “ming_uni.ttf” to /usr/share/fonts/truetype .
- Restart the platform to make the font installation effective.
- Start Firefox, in the address bar type “**about:config** <enter>”.
- Click the “*I’ll be careful, I promise!*” button to proceed.
- In the filter field, type “**font.name**”
- Use “**Ming(for ISO 10646)**” as the value by double clicking the following “Preference Name”

Font.name.monospace.zh-HK	Font.name.monospace.x-unicode
Font.name.monospace.zh-TW	Font.name.monospace.x-western
Font.name.sans-serif.zh-HK	Font.name.sans-serif.x-unicode
Font.name.sans-serif.zh-TW	Font.name.sans-serif.x-western
Font.name.serif.zh-HK	Font.name.serif.x-unicode
Font.name.serif.zh-TW	Font.name.serif.x-western



5. Related preference names are tabulated below for reference:

Traditional Chinese Windows 2000 : marked in **green**

Traditional Chinese Windows XP/Vista : no configuration is required

Mac OS 10.4 : marked in **red**

Open SUSE 10.3 : marked in **blue**

Font.name-list. monospace .zh-HK	Font.name. monospace .zh-HK	Font.name. monospace .x-unicode
Font.name-list.monospace.zh-TW	Font.name.monospace.zh-TW	Font.name.monospace.x-western
Font.name-list. sans-serif .zh-HK	Font.name. sans-serif .zh-HK	Font.name. sans-serif .x-unicode
Font.name-list.sans-serif.zh-TW	Font.name.sans-serif.zh-TW	Font.name.sans-serif.x-western
Font.name-list. serif .zh-HK	Font.name. serif .zh-HK	Font.name. serif .x-unicode
Font.name-list.serif.zh-TW	Font.name.serif.zh-TW	Font.name.serif.x-western
Font.name-list.serif.x-western		